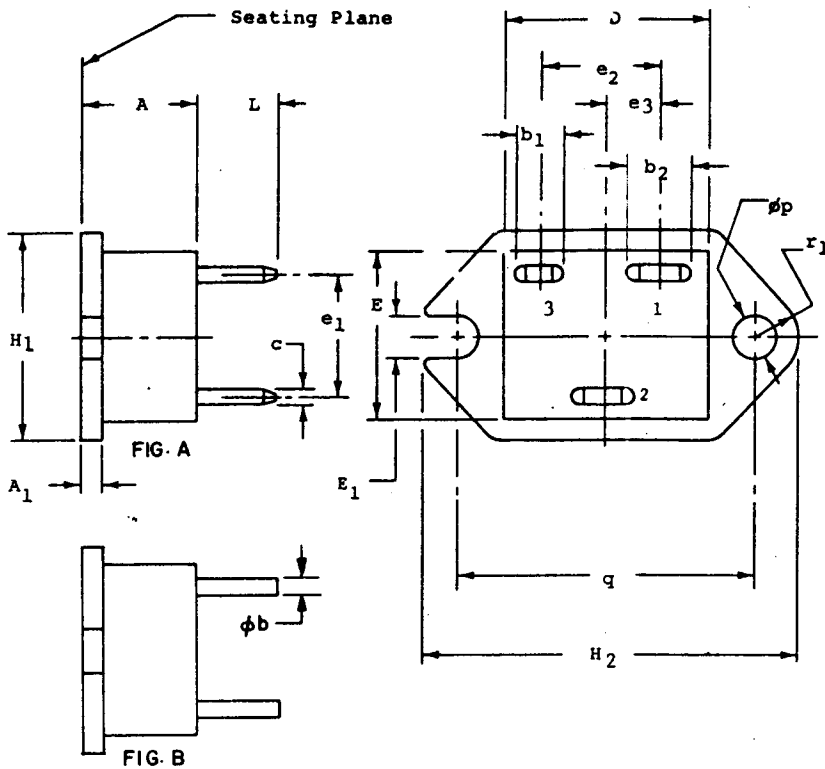


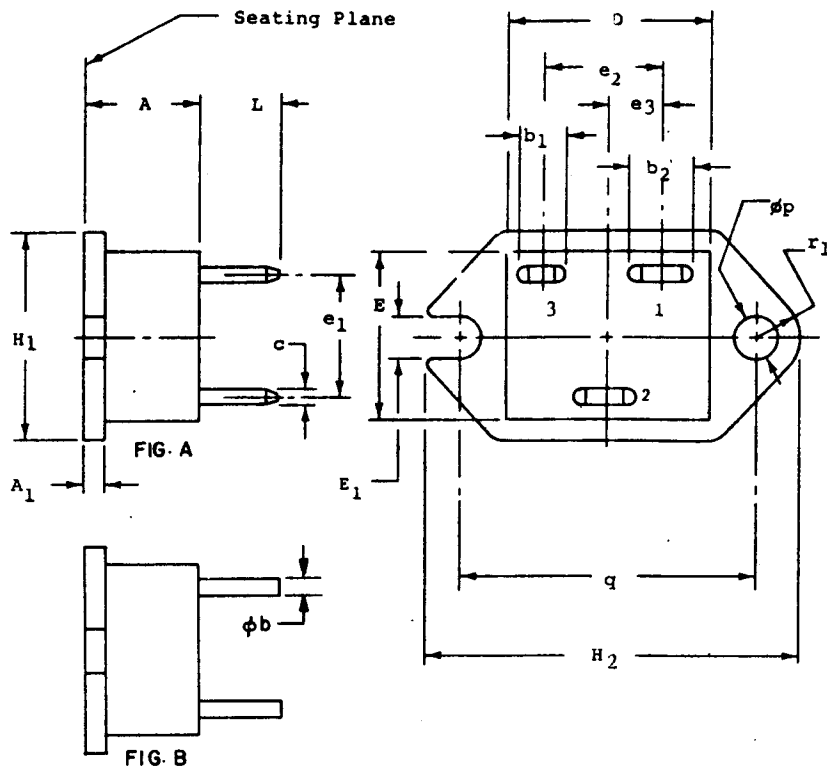
NOTES :

1. REFER TO JEDEC PUBLICATION NO 93, JEDEC REGISTERED AND STANDARD OUTLINES FOR SOLID STATE PRODUCTS, FOR RULES AND GENERAL INFORMATION CONCERNING REGISTERED AND STANDARD OUTLINES.
2. REFER TO TO-SERIES SYMBOL LIST, SECTION 2.1, JEDEC REGISTERED AND STANDARD OUTLINES FOR SOLID STATE PRODUCTS.
3. ALL DIMENSIONING AND TOLERANCING CONFORMS TO AMERICAN NATIONAL STANDARD ANSI Y14.5-1972, DIMENSIONING AND TOLERANCING.
4. IN CASE OF CONFLICT OR INTERPRETATION BETWEEN THE METRIC AND INCH TABULATIONS, THE INCH DIMENSIONS ARE CONTROLLING.
5. THIS DIMENSION APPLIES TO TERMINALS 1 AND 2.
6. TERMINALS CONFORM TO NEMA STANDARDS PUBLICATION NO DC 2-1976. (FIGURE A, VARIATIONS AA & AB).
7. ROUND TERMINAL PIN, 3 PLACES. (FIGURE B, VARIATION AC).



SYMBOL	VARIATIONS (ALL DIMENSIONS SHOWN IN MILLIMETERS)												
	AA		NOTE	AB		NOTE	AC		NOTE	MIN.	MAX.	NOTE	
	MIN.	MAX.		MIN.	MAX.		MIN.	MAX.					
A	9.53	13.33		9.53	12.06		9.53	13.33					
A1	1.02	3.30		1.02	3.30		1.02	3.30					
b1	4.67	4.83	5	4.67	4.83	5	—	—					
b2	6.27	6.43		6.27	6.43		—	—					
phi b	—	—		—	—		2.04	2.08	7				
C	.788	.838	.788	.838	.788	.838	—	—					
D	20.37	20.88		20.50	20.75		20.58	21.22					
E	17.20	17.70		17.78	21.59		17.53	19.16					
E1	3.87	4.11		3.87	4.11		3.87	4.11					
e1	12.45	12.95		12.45	12.95		6.86	7.12					
e2	11.92	12.16		11.92	12.16		9.40	9.66					
e3	5.47	5.71		5.47	5.71		4.57	4.83					
H1	17.40	21.84		20.32	25.40		17.40	21.34					
H2	37.60	38.60		37.60	38.60		37.60	38.60					
L	8.94	10.41		8.94	9.77		—	7.12					
phi p	3.87	4.11		3.87	4.11		3.87	4.11					
q	29.90	30.40		29.90	30.40		29.90	30.40					
r1	—	4.699		—	4.419		—	4.699					
NOTE	1,2,3,4,6			1,2,3,4,6			1,2,3,4,7						
REF.	11.2 -80-64			11.2 -80-64			11.2 -81-60						
ISSUE	C - October 1980			A - October 1980			D - March 1982						
JEDEC SOLID STATE PRODUCT OUTLINES				TITLE FLANGE MOUNTED HEADER FAMILY (Rectangular Body)				ISSUE D		DATE March 1982		TO-238AA-AC	

NOTES:



1. REFER TO JEDEC PUBLICATION NO 95, JEDEC REGISTERED AND STANDARD OUTLINES FOR SOLID STATE PRODUCTS, FOR RULES AND GENERAL INFORMATION CONCERNING REGISTERED AND STANDARD OUTLINES.
2. REFER TO TO-SERIES SYMBOL LIST, SECTION 2.1, JEDEC REGISTERED AND STANDARD OUTLINES FOR SOLID STATE PRODUCTS.
3. ALL DIMENSIONING AND TOLERANCING CONFORMS TO AMERICAN NATIONAL STANDARD ANSI Y14.5-1972, DIMENSIONING AND TOLERANCING.
4. IN CASE OF CONFLICT OR INTERPRETATION BETWEEN THE METRIC AND INCH TABULATIONS, THE INCH DIMENSIONS ARE CONTROLLING.
5. THIS DIMENSION APPLIES TO TERMINALS 1 AND 2.
6. TERMINALS CONFORM TO NEMA STANDARDS PUBLICATION NO DC 2-1976. (FIGURE A, VARIATIONS AA & AB).
7. ROUND TERMINAL PIN, 3 PLACES. (FIGURE B, VARIATION AC).

VARIATIONS

(ALL DIMENSIONS SHOWN IN INCHES)

SYMBOL	AA		NOTE	AB		NOTE	AC		NOTE	MIN.	MAX.	NOTE
	MIN.	MAX.		MIN.	MAX.		MIN.	MAX.				
A	.375	.525		.375	.475		.375	.525				
A ₁	.040	.130		.040	.130		.040	.130				
b ₁	.184	.190	5	.184	.190	5	---	---				
b ₂	.247	.253		.247	.253		---	---				
phi_b	---	---		---	---		.080	.082	7			
C	.031	.033		.031	.033		---	---				
D	.802	.822		.807	.817		.810	.835				
E	.677	.697		.700	.850		.690	.750				
E ₁	.152	.162		.152	.162		.152	.162				
e ₁	.490	.510		.490	.510		.27	.28				
e ₂	.469	.479		.469	.479		.37	.38				
e ₃	.215	.225		.215	.225		.18	.19				
H ₁	.685	.860		.800	1.000		.685	.860				
H ₂	1.480	1.520		1.480	1.520		1.480	1.520				
L	.352	.410		.352	.385		.250	.280				
phi_p	.152	.162		.152	.162		.152	.162				
q	1.177	1.197		1.177	1.197		1.177	1.197				
r ₁	---	.185		---	.174		.175	.185				
NOTE	1,2,3,4,6			1,2,3,4,6			1,2,3,4,7					
REF.	11.2 -80-64			11.2 -80-64			11.2 -81-60					
ISSUE	C - October 1980			A - October 1980			D - March 1982					

JEDEC SOLID STATE PRODUCT OUTLINES	TITLE FLANGE MOUNTED HEADER FAMILY (Rectangular Body)	ISSUE D	DATE March 1982	T0-238AA-AC
--	---	------------	-----------------------	-------------