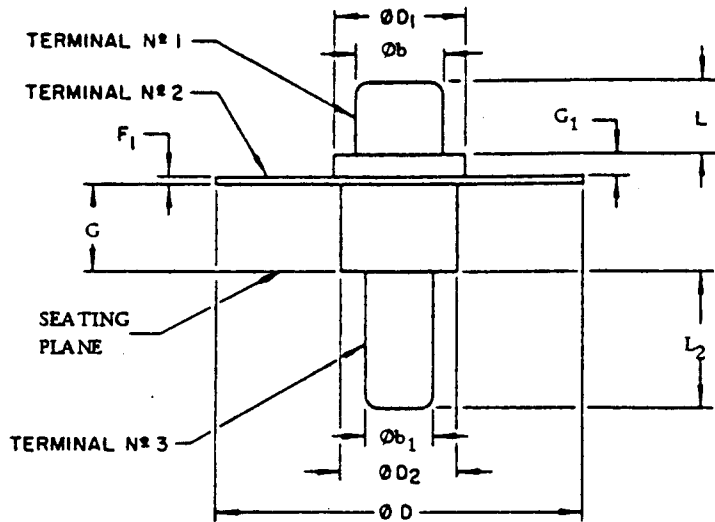


NOTES :

1. Refer to rules for dimensioning semiconductor product outlines



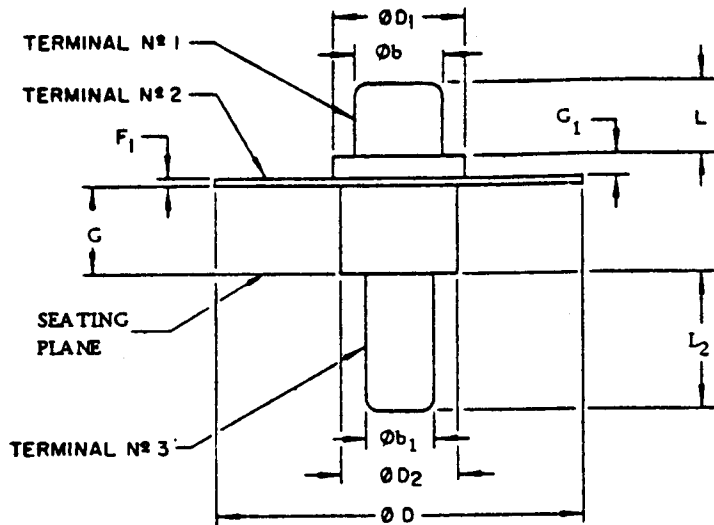
VARIATIONS (ALL DIMENSIONS SHOWN IN MILLIMETERS)

SYMBOL	AA		NOTE			NOTE			NOTE			NOTE
	MIN.	MAX.		MIN.	MAX.		MIN.	MAX.		MIN.	MAX.	
	$\varnothing b$	2.972		3.124								
$\varnothing b_1$	2.286	2.387										
$\varnothing D$	12.599	12.801										
$\varnothing D_1$	4.445	4.699										
$\varnothing D_2$	3.988	4.241										
$F_1$	.229	.304										
$G$	2.90	3.22										
$G_1$	.69	1.01										
$L$	2.490	2.667										
$L_2$	4.55	4.85										
NOTE	1											
REF.	Item 269G											
ISSUE	A June, 1971											

JEDEC SEMICONDUCTOR DEVICE OUTLINES	TITLE COAXIAL PACKAGE OUTLINE	ISSUE A	DATE JUNE 1971	<b>T0-215AA</b>
---	----------------------------------	------------	----------------------	-----------------

NOTES :

1. Refer to rules for dimensioning semiconductor product outlines



VARIATIONS (ALL DIMENSIONS SHOWN IN INCHES)

SYMBOL	AA		SECTION			NOTE			NOTE			NOTE
	MIN.	MAX.		MIN.	MAX.		MIN.	MAX.		MIN.	MAX.	
$\phi b$	.117	.123										
$\phi b_1$	.090	.094										
$\phi D$	.496	.504										
$\phi D_1$	.175	.185										
$\phi D_2$	.157	.167										
$F_1$	.009	.012										
$G$	.114	.127										
$G_1$	.027	.040										
$L$	.098	.105										
$L_2$	.179	.191										

NOTE	1											
REF.	Item 269G											
ISSUE	A June, 1971											

JEDEC SEMICONDUCTOR DEVICE OUTLINES	TITLE COAXIAL PACKAGE OUTLINE	ISSUE A	DATE JUNE 1971	<b>TO-215AA</b>
---	----------------------------------	------------	----------------------	-----------------